



# GAT MONTHLY MEMBERSHIP PROGRESS REPORT

Results as of: 1/31/2023

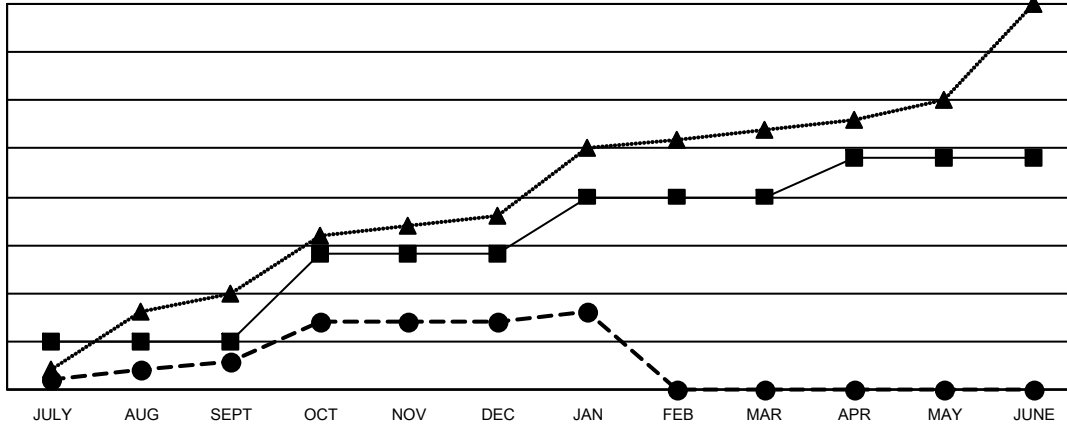
Multiple District 308

LOCATION: SINGAPORE

Clubs			
RESULTS FOR 2022-2023			
QUARTER	NEW CLUB GOAL	NEW CLUBS	DROPPED CLUBS
JULY/AUG/SEPT	5	3	4
OCT/NOV/DEC	9	4	4
JAN/FEB/MAR	6	1	4
APR/MAY/JUNE	4	0	0

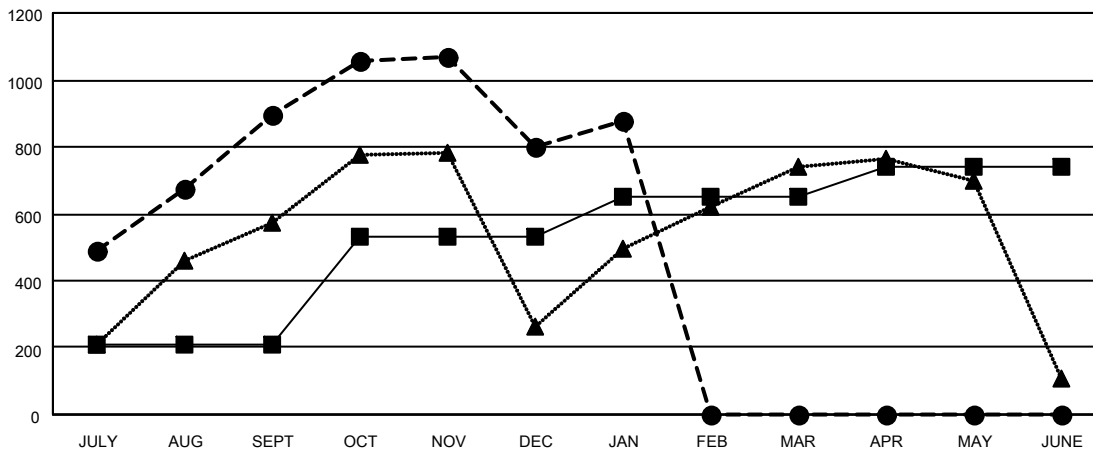
Members			
RESULTS FOR 2022-2023			
QUARTER	MEMBER GROWTH NET GOAL	MEMBER GROWTH ACTUAL	DROPPED MEMBERS ACTUAL (including transfers)
JULY/AUG/SEPT	210	1,230	271
OCT/NOV/DEC	320	396	458
JAN/FEB/MAR	120	166	89
APR/MAY/JUNE	90	0	0

GOALS AND ACTUAL NEW CLUBS CUMULATIVE



- - CURRENT YEAR GOALS FOR NEW CLUBS
- - CURRENT YEAR ACTUAL NEW CLUBS
- ▲ - LAST YEAR ACTUAL NEW CLUBS

GOALS AND ACTUAL MEMBERS CUMULATIVE



- - MEMBER GROWTH NET GOAL
- - MEMBER GROWTH ACTUAL
- ▲ - LAST YEAR MEMBERSHIP ACTUAL

DROPPED CLUBS: 12	
<b>DROPPED MEMBERS</b>	
DECEASED	23
CLUB CANCELLED	111
OTHER	683
<b>TOTAL</b>	<b>817</b>

292 CLUBS OF 483 ADDED 1 OR MORE NEW MEMBERS

[CLICK HERE FOR CUMULATIVE MEMBERSHIP DATA](#)

GENDER DISTRIBUTION	
MALE	9,029 (64.59%)
FEMALE	4,890 (34.98%)
NON BINARY	0 (0.00%)
PREFER NOT TO ANSWER	61 (0.44%)
<b>TOTAL FAMILY UNIT MEMBERS</b>	<b>2,038</b>
<b>FAMILY MEMBERS PAYING HALF DUES</b>	<b>1,176</b>